

SCHOLASTIC

PRIME

Mathematics

Identifying Students' Starting Point



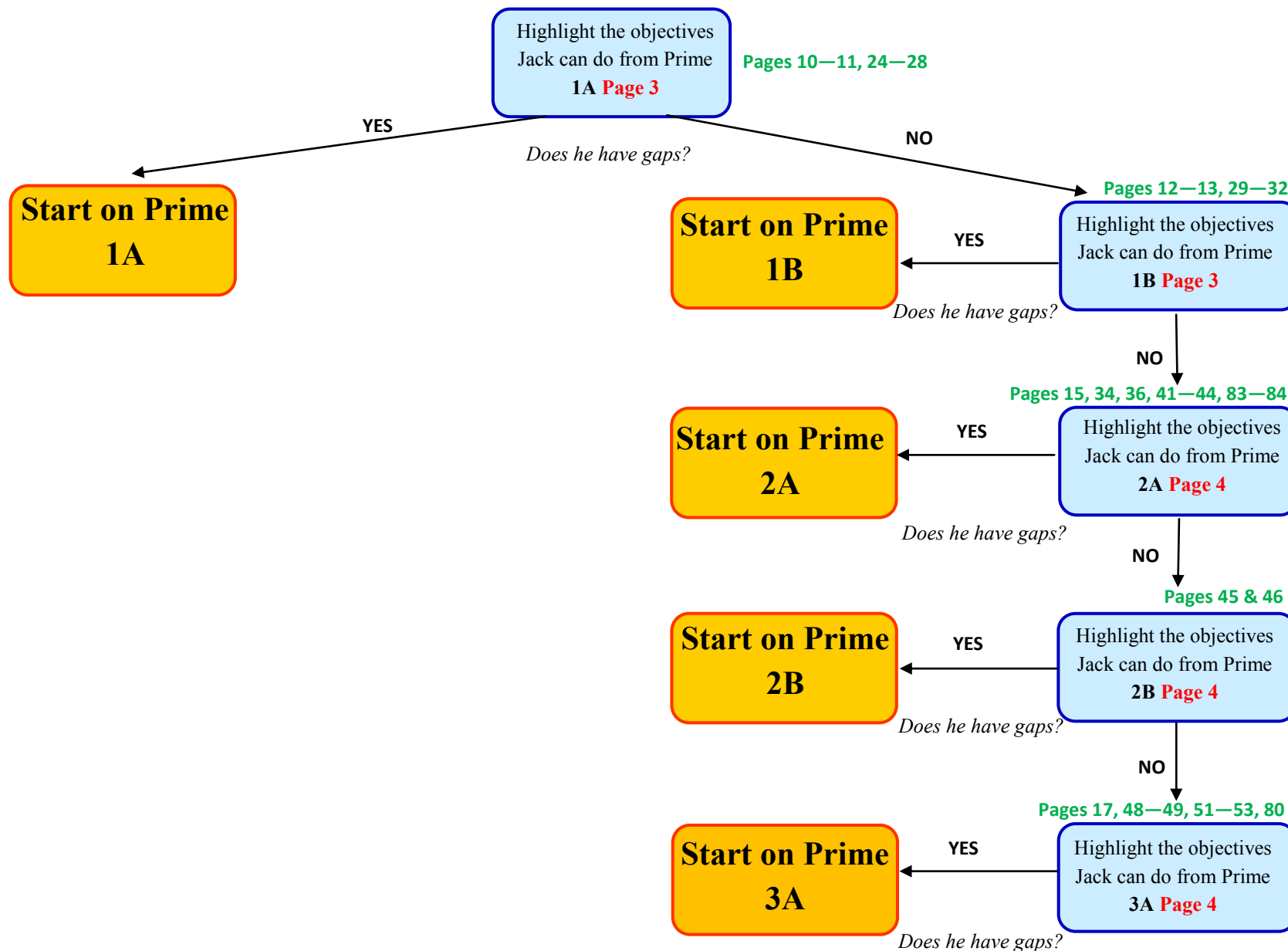
Identifying Students' Starting Point: Year 3

Using *PRIME Mathematics and the NZ Curriculum* by Lester Flockton
& *PRIME Mathematics: Implementation Guide*



Jack is a Year 3 student—last year his OTJ was 'At' at the end of Year 2.

Use this flow diagram to help you find a starting point for your Year 3 students.



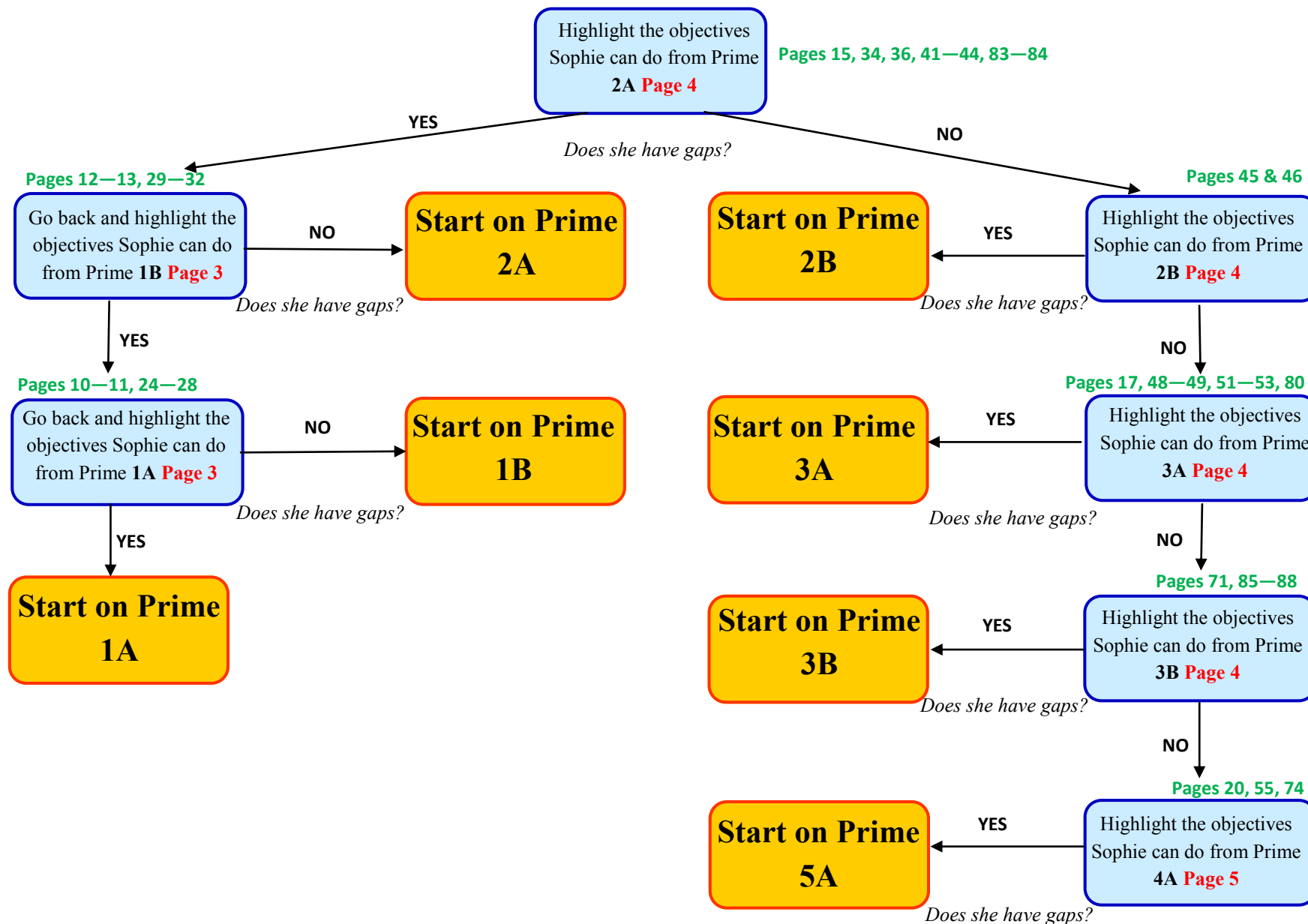
Identifying Students' Starting Point: Year 4

Using **PRIME Mathematics and the NZ Curriculum** by Lester Flockton
& **PRIME Mathematics: Implementation Guide**



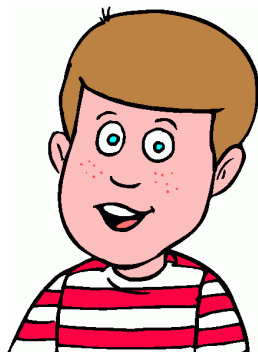
Sophie is a Year 4 student—last year her OTJ was ‘At’ at the end of Year 3.

Use this flow diagram to help you find a starting point for your Year 4 students.



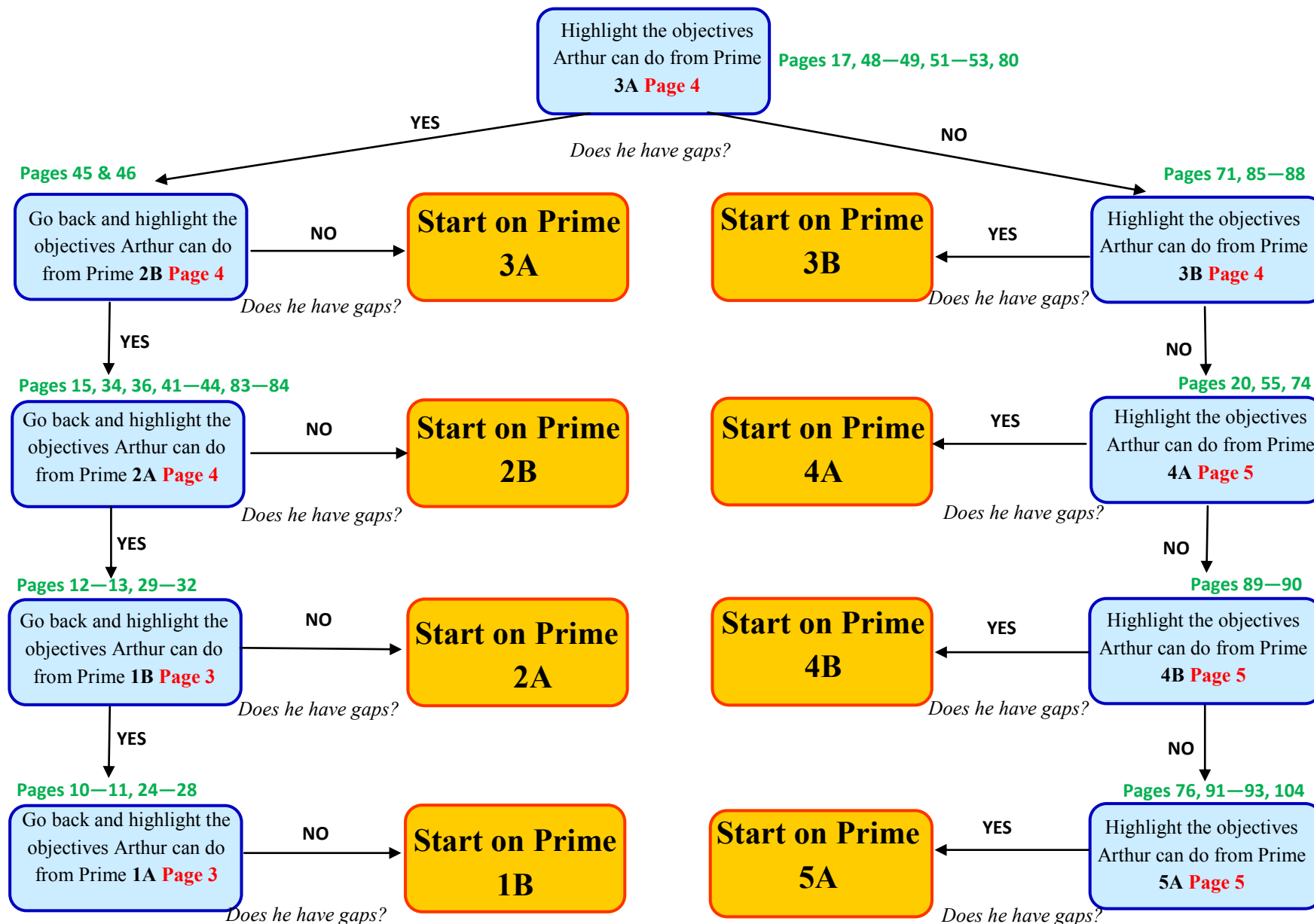
Identifying Students' Starting Point: Year 5

Using **PRIME Mathematics and the NZ Curriculum** by Lester Flockton
& **PRIME Mathematics: Implementation Guide**



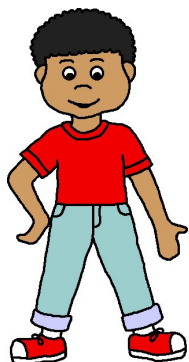
Arthur is a Year 5 student—last year his OTJ was 'At' at the end of Year 4.

Use this flow diagram to help you find a starting point for your Year 5 students.



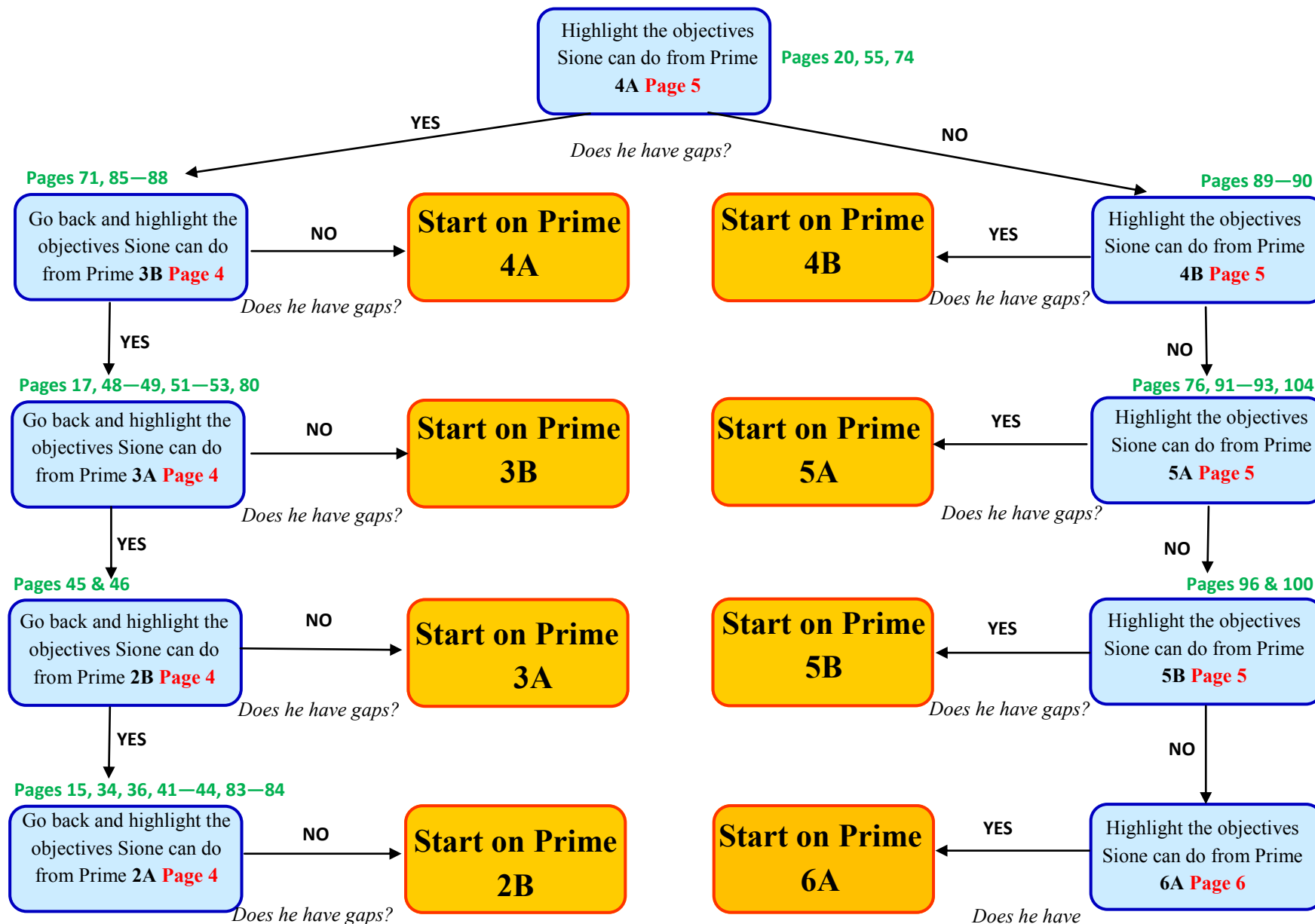
Identifying Students' Starting Point: Year 6

Using **PRIME Mathematics and the NZ Curriculum** by Lester Flockton
& **PRIME Mathematics: Implementation Guide**



Sione is a Year 6 student—last year his OTJ was 'At' at the end of Year 5.

Use this flow diagram to help you find a starting point for your Year 6 students.



Identifying Students' Starting Point: Year 7 & 8

Using **PRIME Mathematics and the NZ Curriculum** by Lester Flockton
& **PRIME Mathematics: Implementation Guide**



Mia is a Year 7 student—last year his OTJ was ‘At’ at the end of Year 6.
Use this flow diagram to help you find a starting point for your Year 7 & 8 students.

